

LOVE IN ACTION

3D MAP



The idea: To get members of your parish and others from the local community to comment on your area and any concerns they have - and add them all to a huge map.



Your map will have to hold a lot of information. Making a big enough map can be tricky. You'll need to make sure people can see/recognise the streets and areas you're asking them to attach their concerns and comments to. There are several ways to do this:



Google Maps

If you don't have a large map on hand that you can use, go to www.wikihow.com/Print-Google-Maps to find out how to print off maps from google in the easiest way.

It may be that you have to print four or eight sheets and stick them together to get a larger map of your area that everyone can engage with.

1

A-Z MAPBOOK

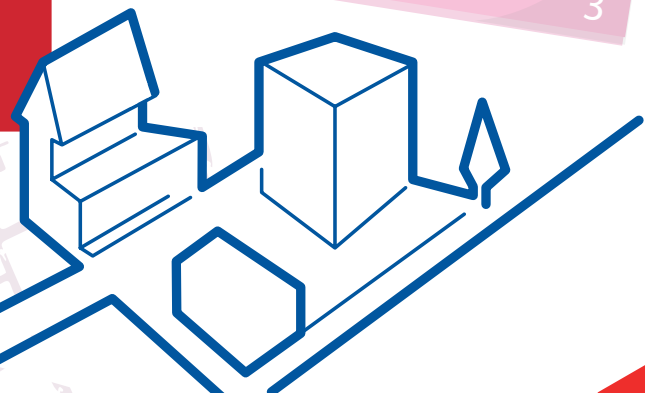
Take apart a giant A-Z mapbook of your local area. Glue the pages onto a backing board, matching the pages up to create a huge map.

2

Buy one the right size. You can usually buy maps of your own town in High Street book shops. Also check out the online map services - you can order a map of exactly the area you want at the right size.

3

There is an infinite number of ways you can make your map look more interesting. Even a small amount of time spent creating a simple model will ensure people will look at it, and then comment.



It's up to you how you choose to do it, just remember that you want as many young people as possible giving you their feedback/concerns/comments on the area so if it doesn't attract your attention, chances are it won't attract theirs!

Why not use the 'Pop Up Model' and 'Cut Out Model' sheets to make models to bring the map alive? Use local landmarks. This can help make people remember what to say.

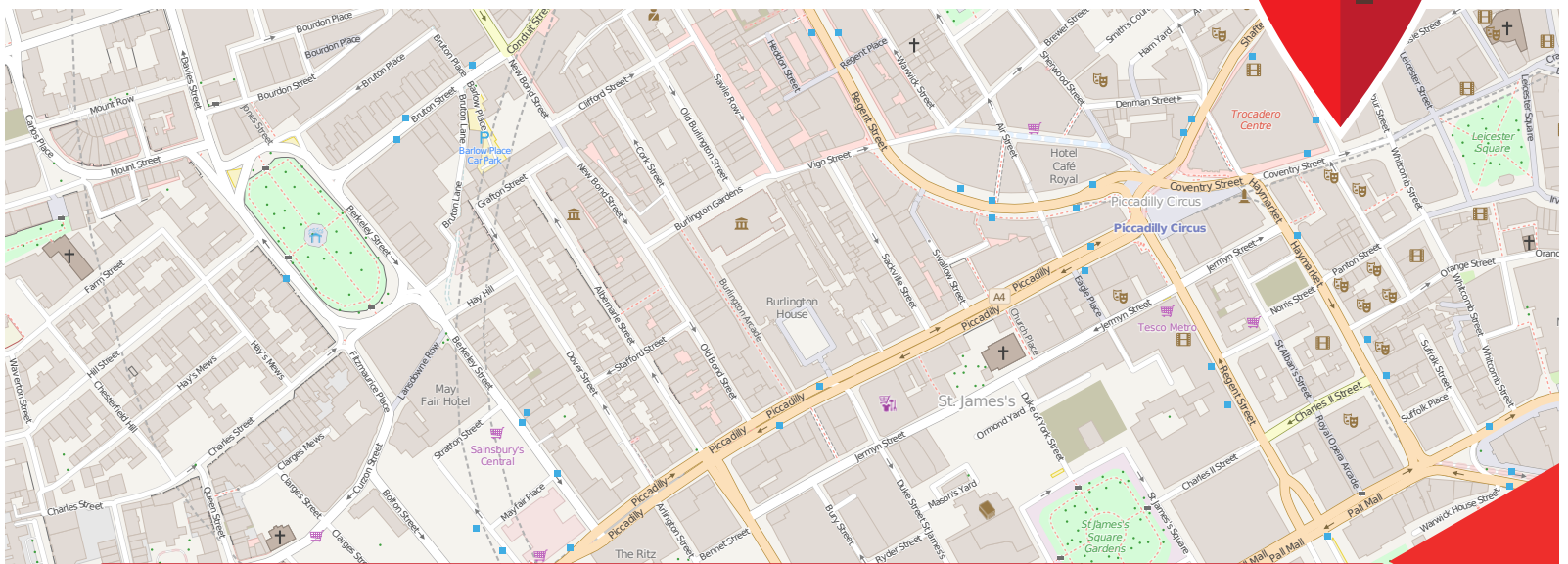
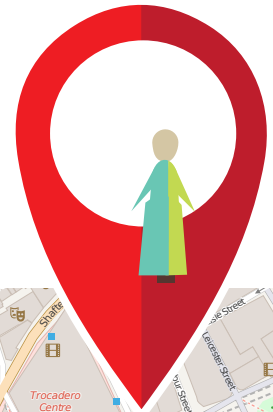
YOUR MAP AND WHAT TO DO NEXT



Once you've got your map, mark out the streets, houses and places where you spend your time e.g. work, school, home, parks, sports clubs, churches etc. Make location pins to write on and pin in the map (use ordinary dress-making pins and triangles of paper) - or use post-it notes.

Use the location pins to add concerns to the map. For example:

Where you don't feel safe to walk, where young people hang out because they have nothing to do, where the local youth club was closed down, where a person got attacked, your places of work with tough working conditions, known areas for deprivation, crime, over crowded housing etc.



Invite others to add their concerns:

Invite people to one of your meetings - provide some food and drink - get them talking around the map and adding their flags. Explain that your parish wants to discover what people are bothered about, so you can plan an action to take out into your community. Who can you ask? Look at your Friends and Contacts' Chart.

DISPLAY

Put the map in places where people can add their comments/concerns. e.g. sports centres, community events (e.g. summer fete), local cafes, youth clubs, churches, community centres.



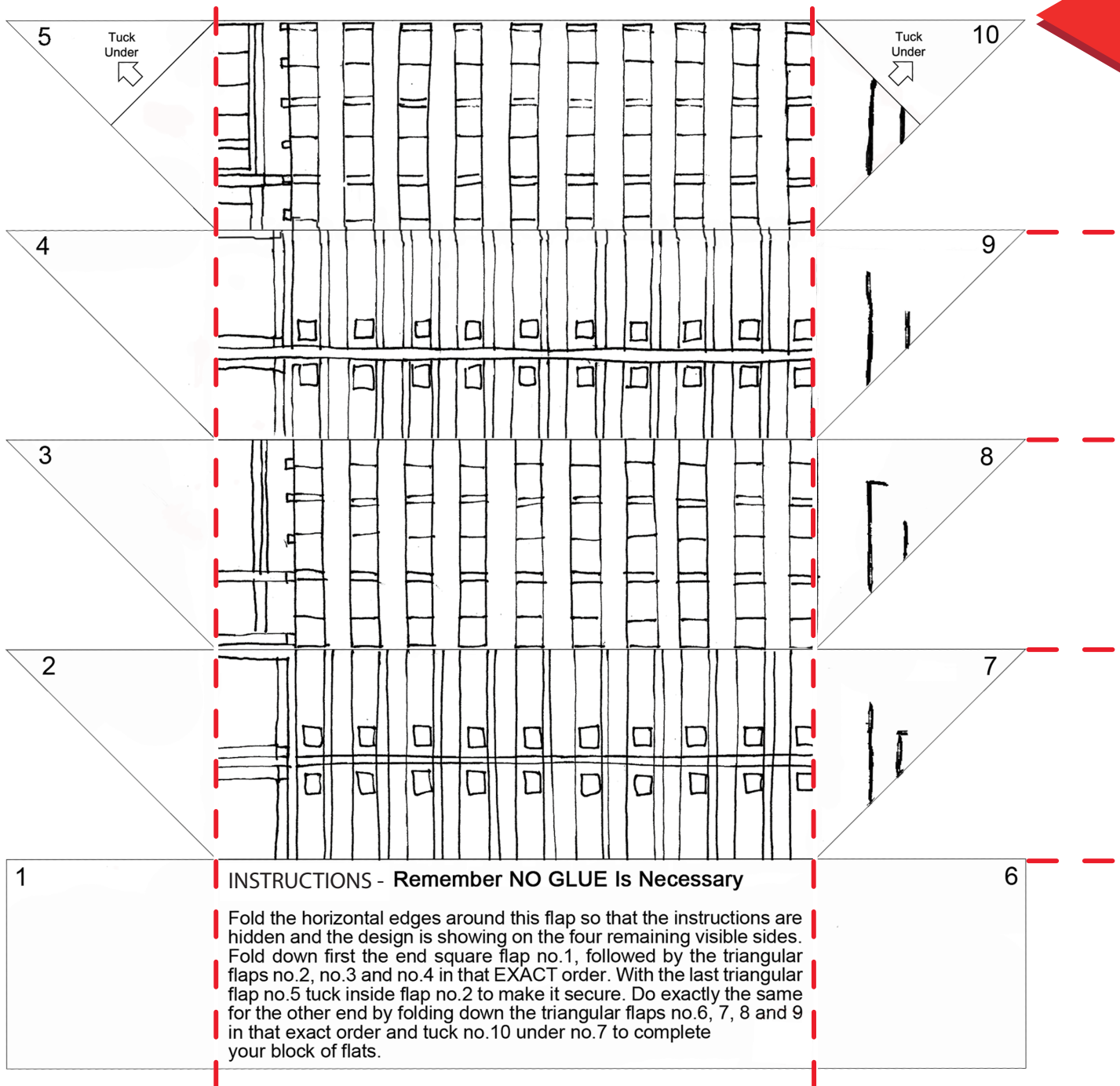
- Ask everyone who adds something to your map to leave their contact details. Tell them you will keep in touch about what happens with your action. Make sure you invite them all to any events/activities you organise, and to your final celebration.

CUT OUT MODEL



SCORE ALONG THE
RED DOTTED LINES

TOP OF THE BLOCK
OF FLATS



BASE - GLUE THIS
TO YOUR MAP



Cut out and fold into shape using the instructions

Decorate if you want to!

You can find plenty more model ideas online to help
you make your map 3D

LOVE IN ACTION

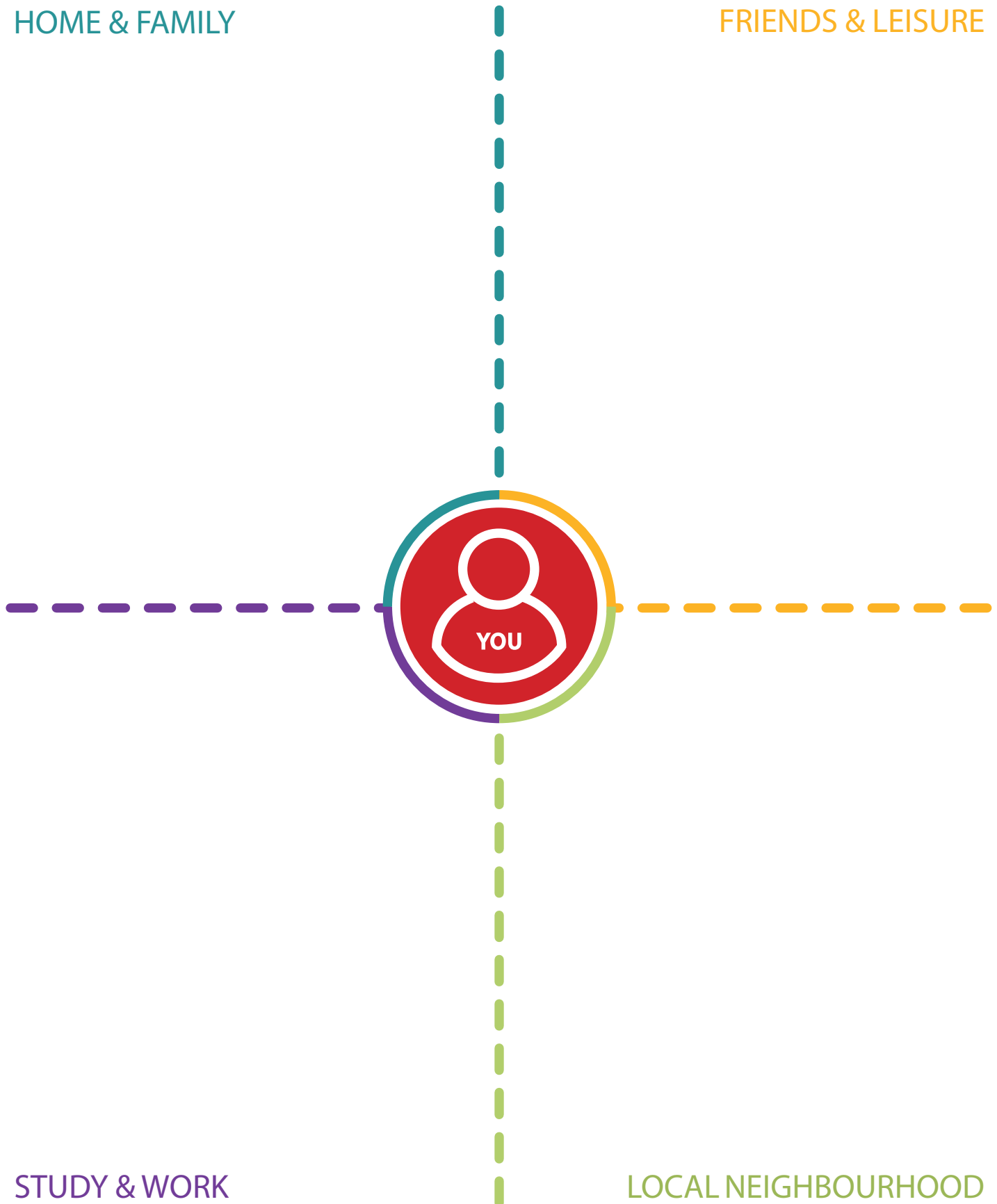


FRIENDS AND CONTACTS



HOME & FAMILY

FRIENDS & LEISURE



LOVE IN ACTION

FRIENDS AND CONTACTS




Write down the names of friends and other people you come into contact with in the four different areas of life: Home & Family, Local Neighbourhood, Study & Work, Friends & Leisure.



Either make your own chart, or use the one provided. Or just use a notebook.

LOVE IN ACTION

FRIENDS AND CONTACTS



HOME & FAMILY

FRIENDS & LEISURE

STUDY & WORK

LOCAL NEIGHBOURHOOD

YOU

USE IT TO

- Decide who to contact to better understand a situation during your Love in Action parish plan.
- Help you to decide who to invite to comment on your map.
- See who to invite to join an activity/ event which the parish is organising.

YOU CAN ALSO SPEND A FEW MINUTES ASKING SOME QUESTIONS!

- Has anything happened to the people on my chart this week?
- Have you got to know them any better?
- Does anyone stand out about whom you are especially concerned? Why?

- How can you be of service to those around you this coming week?
- Is there anything practical you can do for one or two particular people on your chart?
- Is there anything we talked about at the meeting that you can discuss with them?

LOVE IN ACTION

HOW TO MAP



NOTES

There are many different ways in which you can record the environment within which you live.

The aim of this whole exercise is to get information about the concerns and lives of other people living in your area - so that you can see what it is you are called to make better, or to encourage more of!

SEE THE **3D**
MAP

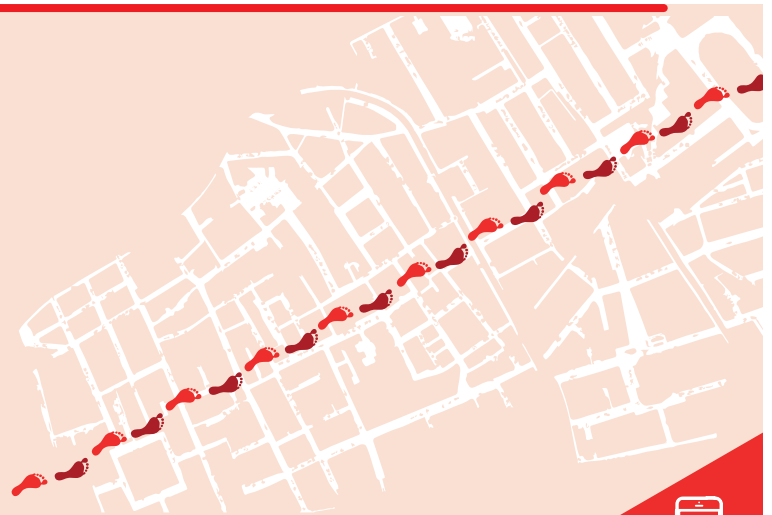
YOUR CONTACTS ENQUIRY

Ask at least three of your contacts who live in the area on your map to comment on what life's like living there - good and bad things. Ask them to think about: friends & leisure, home & family, work & study, local neighbourhood. Record what they say, so you can add them to the map. Record their names so you can invite them to join in your action - or see if they want to help plan it.

WALK THE LINE



- 1 Draw a straight line through a map of your local area.
- 2 Walk the line and see if there are issues which affect the people who live there.
- 3 Use photos and notes to record a cross section of life in your local community.
- 4 Stick the photos and any notes you made onto a roll of lining paper on the wall.
- 5 Transfer all the information onto your 3D Map.



QUESTIONNAIRES



... are a useful tool to get people to comment in a focused way. When you design a questionnaire think carefully about the questions and how you'll use the answers.

- 1 Keep it relevant
- 2 Think about how you'll get the questionnaires filled in (e.g. each person asks five friends/contacts)

NOTES

Remember to invite other people to take part in the action you are planning.



- 1 Use your mobile or camera to create a film about your local community.
- 2 Film people talking about their concerns / thoughts and collect these together to present to your parish.

LOVE IN ACTION

LOOK CLOSER



CHOOSE YOUR ISSUE IN YOUR PARISH THAT YOU'LL BE FOCUSING ON!

Use these two ideas to help you **SEE** your chosen issue more clearly.

Surround it with the facts that build up the bigger picture.

Identify an issue that comes out of the situation that you want to focus on. Continue to think about all the things that surround the issue. Ask the questions: WHO? WHERE? HOW? WHAT?

Build up that picture.

THE BIG PICTURE

Remember, it's not about what you think about it, YET. It's just about the cold, hard facts of the situation.

OR

USE THE CARITAS TREE SHEET

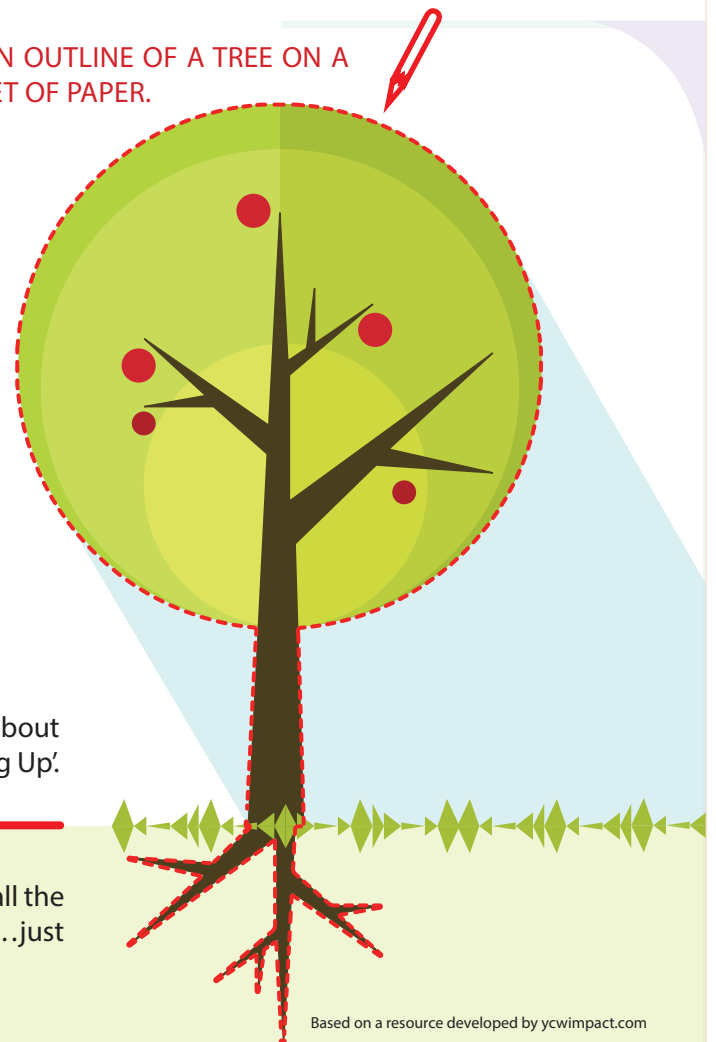
- Look at the issues that have concerned you so far.
- Choose one issue and write it on the tree trunk.
- Write the causes of the issue on the roots.
- The consequences on the branches.

DRAW AN OUTLINE OF A TREE ON A BIG SHEET OF PAPER.

After you have completed 'The Big Picture' and/or the 'Issue Tree' decide what aspect of your chosen issue you want to try and change (you don't have to try and solve it all!) Then continue with your **JUDGE**, and **ACT**, to plan how you will make a difference. (Use the 'Plan of Action' sheets to plan how you're going to achieve it.)

Ask... what do we think about it? What does our faith say about it? What are our responsibilities? Look at the DVD 'Stepping Up'.

Next step is to ask... What can you do about it? think about all the different things that could be done. Think small, think big...just get all those ideas out.



LOVE IN ACTION

PLAN OF ACTION



THE TITLE OF YOUR PARISH PROJECT



What do you want to achieve?
YOUR AIM FOR THE PROJECT

THE STEPS TO

MILESTONES

GET YOU THERE

 **TIME PLAN**

 **CONTACTS**



 **FINANCIAL PLAN**

LOVE IN ACTION

POP UP MODEL



- Use an actual photo of the people and places you want to show on your map.
- Print it off.
- Stick it to a piece of card...



- Cut around the bit of the picture you want to make 3D.

NOTES

- Don't forget to leave enough card to act as the pop-up hinge!

- Bend at the hinge, and now your "Pop Up Model" is ready to use.



DON'T BE AFRAID
TO PLAY AROUND
WITH IT!

Have fun with what you choose to cut out as this affects the overall perspective and how it looks 3D!

If it goes wrong... Don't worry, just start again!